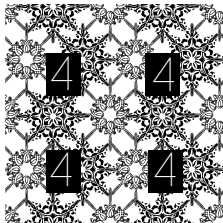


How to use this font ?

INSTALLING THE FONT:

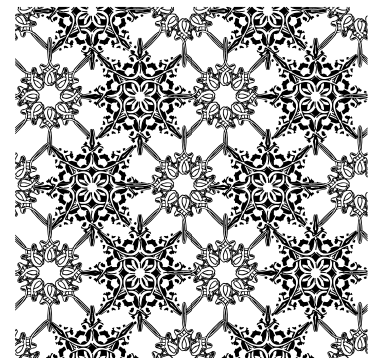
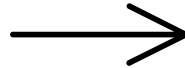
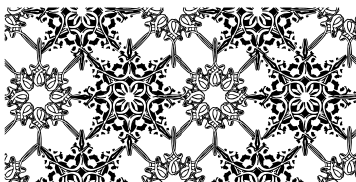
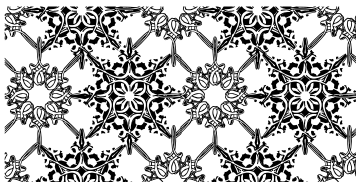
1. Close all programs
2. Unzip the downloaded package
3. Right click on the font file
4. The pop up will appear
5. From the pop up menu choose "INSTALL"
6. The computer installs the font on the system
7. The font is ready to use
8. Open Illustrator, Photoshop, Word etc. and have fun with Ivy Tiles :)

USING THE FONT [STARS MEDLEY, digits 0-9 & Stars PROMO, digit 7]:



If you are using Microsoft Word or similar application you are good to go after you type the letter associated with the pattern of your choice. The pattern will appear automatically. Please note that in Word etc. you will be able to produce simple [one layer] pattern, as Word and similar applications is unable to overlay patterns.

If you are using Adobe Illustrator or similar application it may happen that you will need to adjust the leading to the size when the lines will meet. Once this is done – interconnecting pattern will appear



Adjusted Leading